

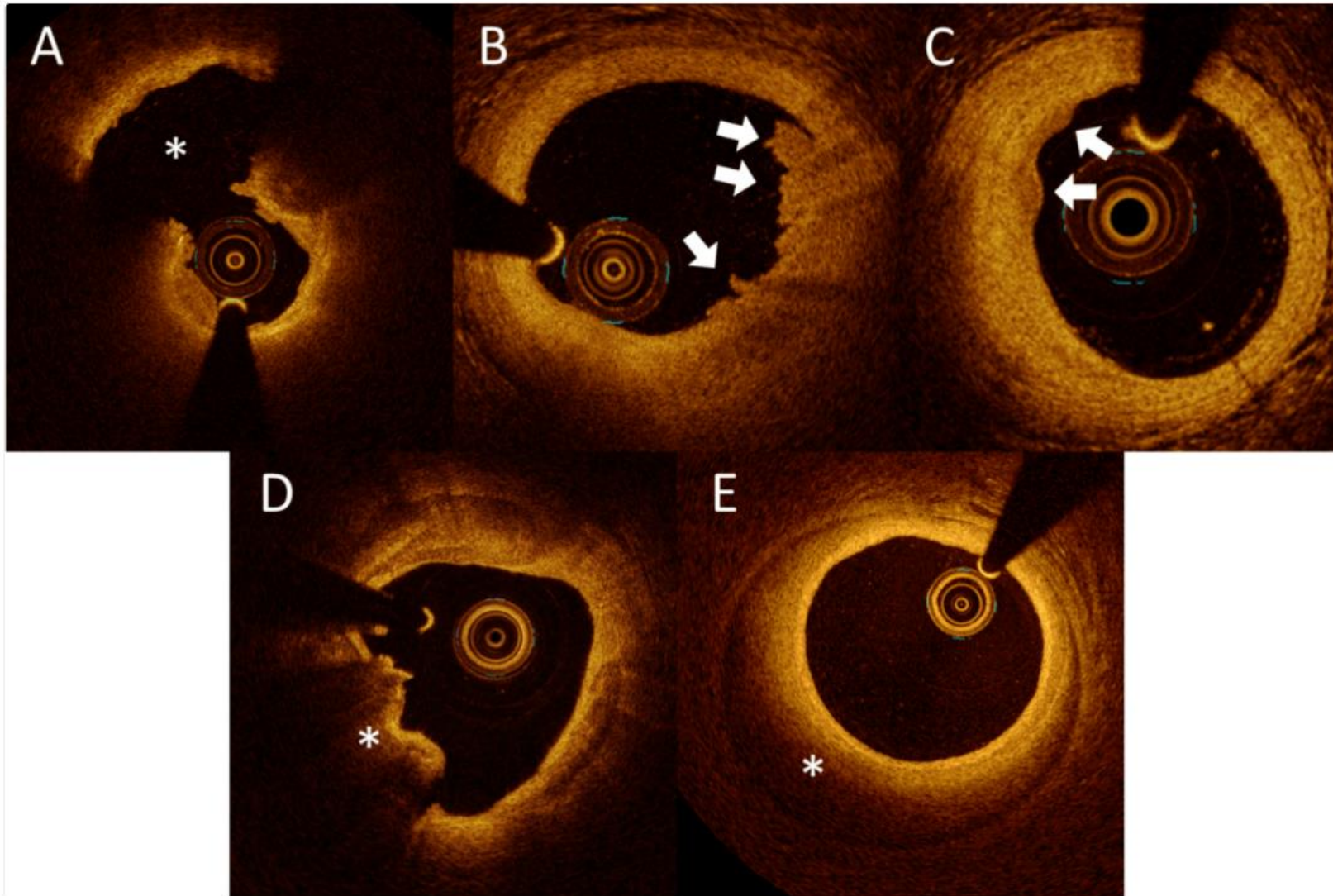


**ASICO**  
CONGRESS 2026

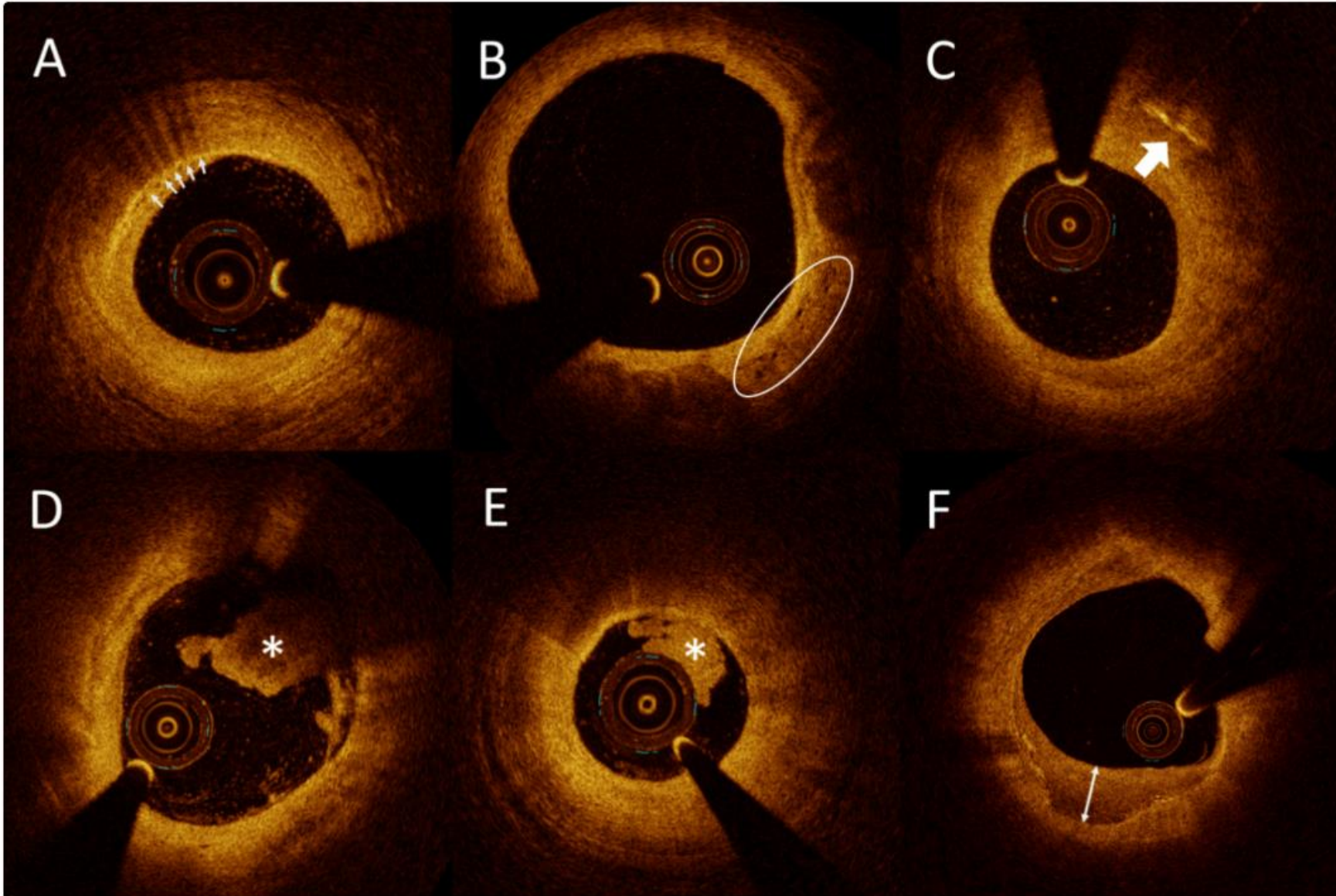
# Hình ảnh OCT trong ACS

---

**BS. Nguyễn Xuân Vinh**  
**Trung tâm Tim Mạch Can Thiệp**  
**BVĐK Tâm Anh TP.HCM**



- A. Plaque rupture
- B. Erosion + thrombus appositions
- C. Erosion without thrombus
- D. Ruptured calcified cap
- E. Spontaneous dissection (with hematoma)



- A. Macrophage infiltration
- B. Microvessels
- C. Cholesterol crystals
- D. Red thrombus  
(high attenuation, shadow)
- E. White thrombus  
(minimal attenuation, no shadow)
- F. Fragmentation



# OCT images in ACS



ESC

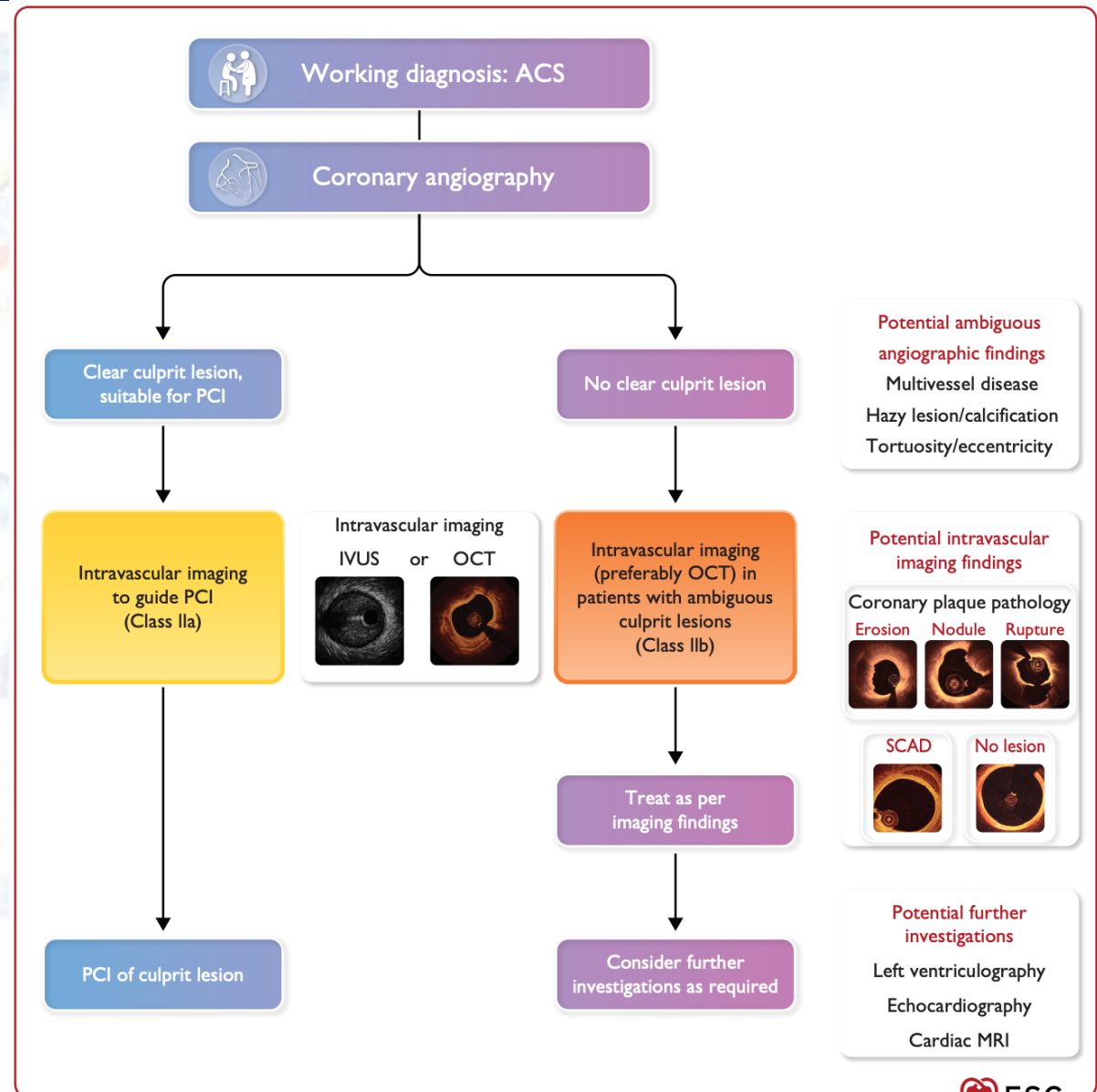
European Society of Cardiology

European Heart Journal (2023) 44, 3720–3826  
<https://doi.org/10.1093/eurheartj/ehad191>

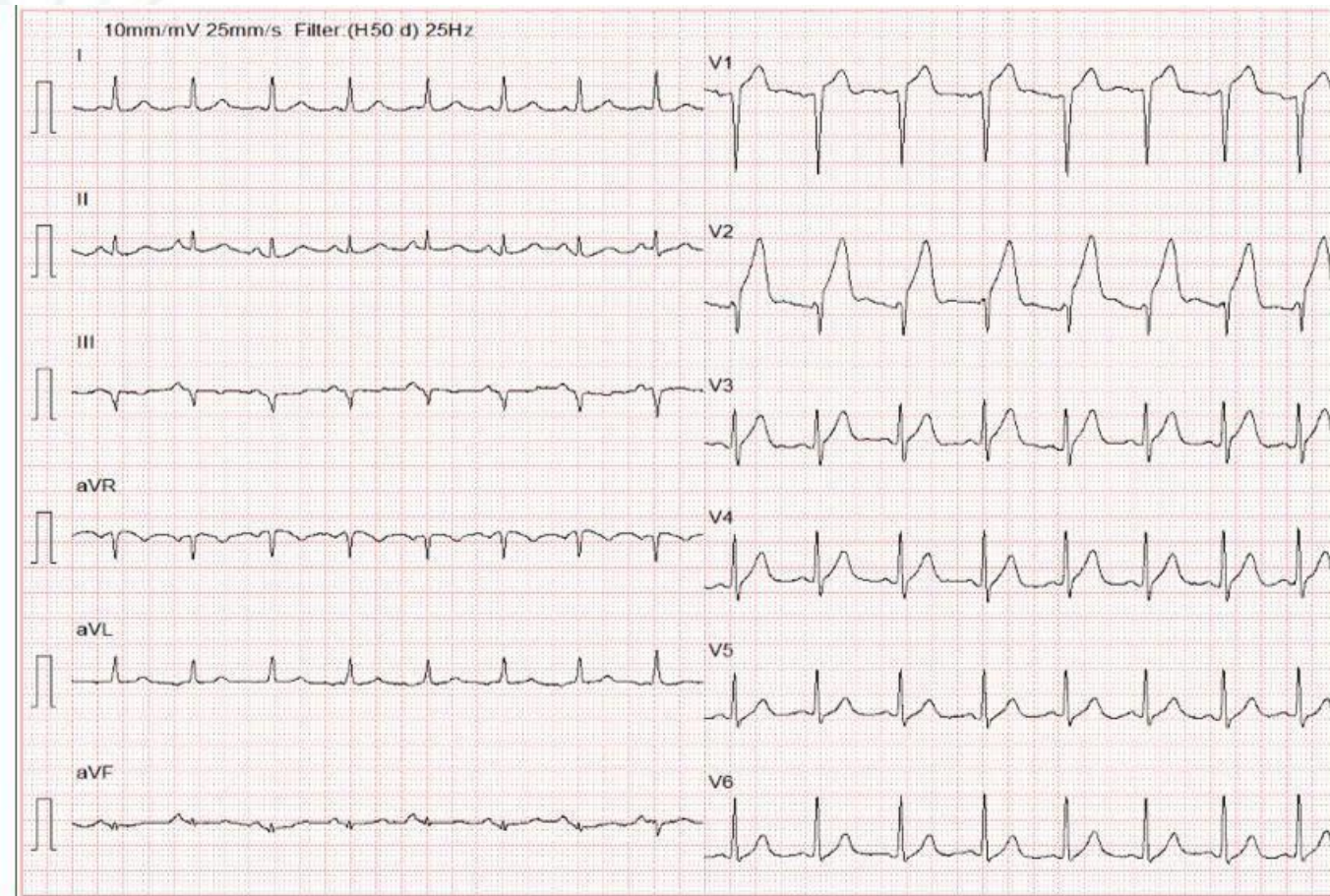
ESC GUIDELINES

## 2023 ESC Guidelines for the management of acute coronary syndromes

Developed by the task force on the management of acute coronary syndromes of the European Society of Cardiology (ESC)



- M, 51 y.o
- Hx: HTN, T2DM, NSTEMI (01 month, refused PCI)
- CC: chest pain 1<sup>st</sup> hr, sweating
- Vital signs: P 97 bpm, BP 150/90 mmHg, SpO<sub>2</sub> 97%
- ECG: anterior STEMI
- Flash echo: LV hypokinesia (EF#25%)

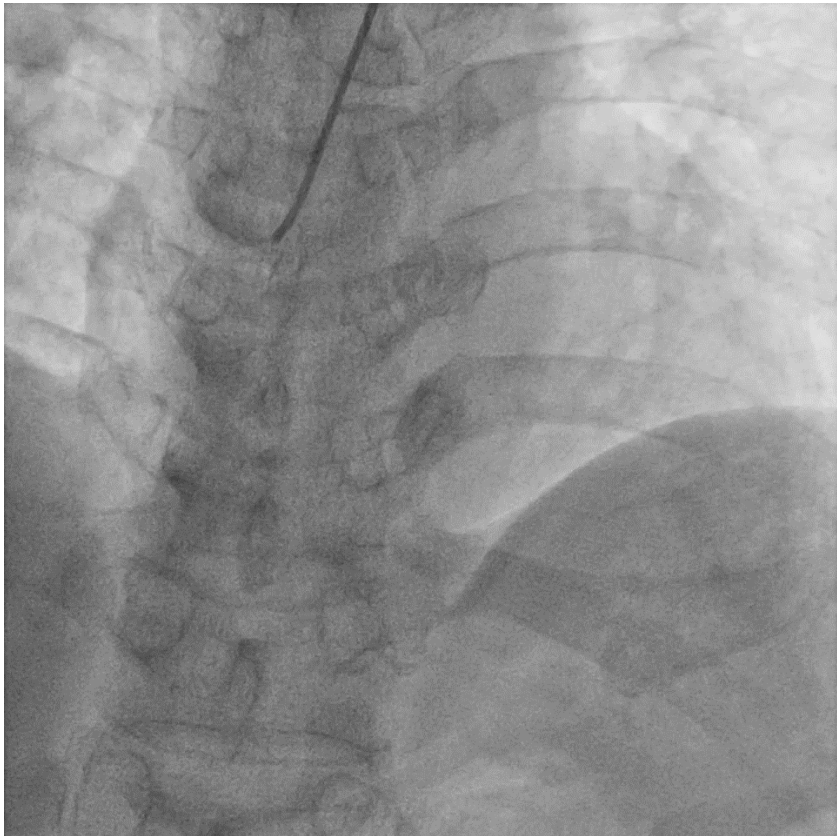


**Dx:** Ant.STEMI 1<sup>st</sup> hr, Killip I/Recent NSTEMI; HTN; T2DM; Dyslipidemia.

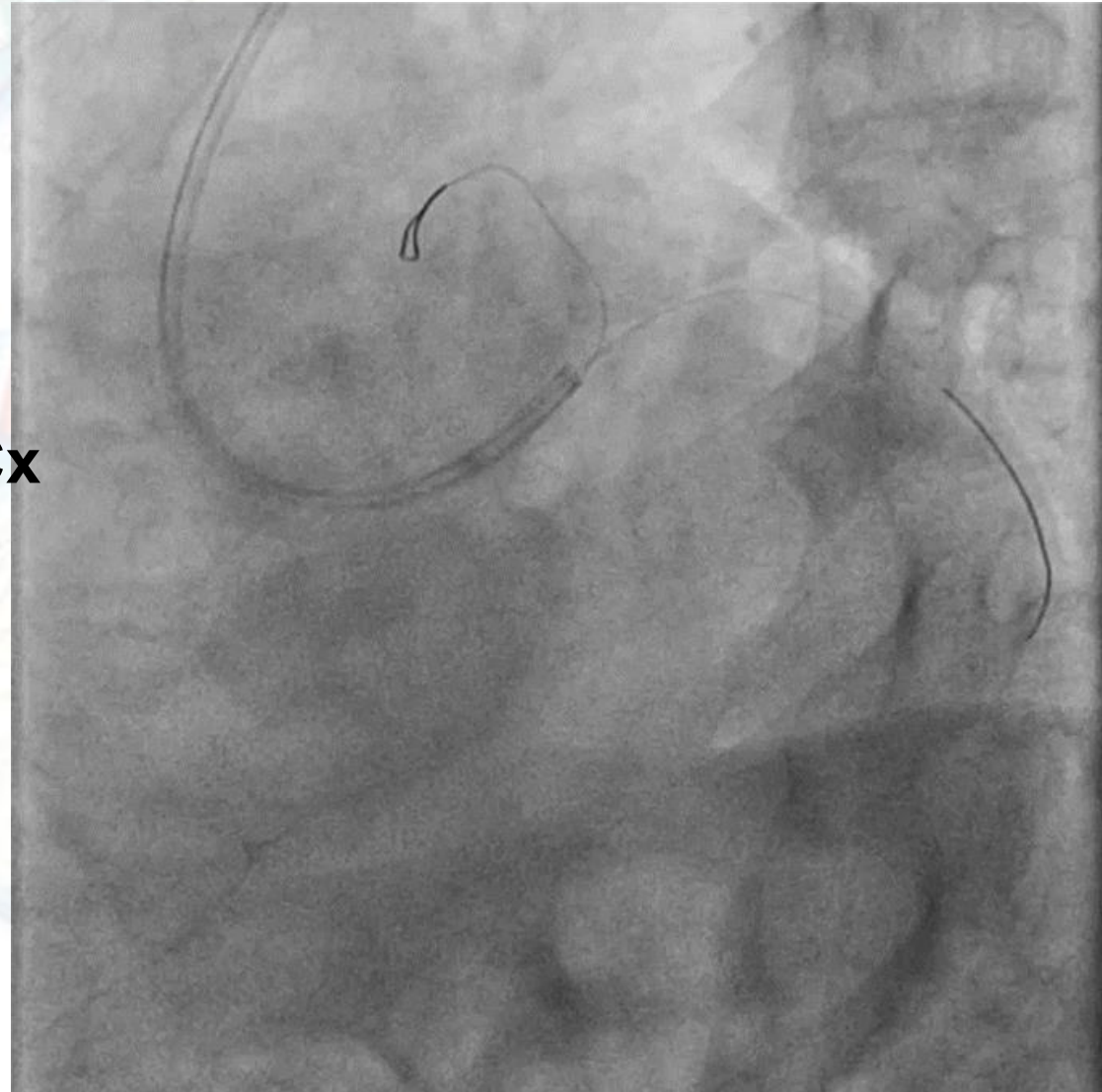
**Rx:** LD (Brilinta, ASA, Ator)  Cathlab activation for **pPCI**.

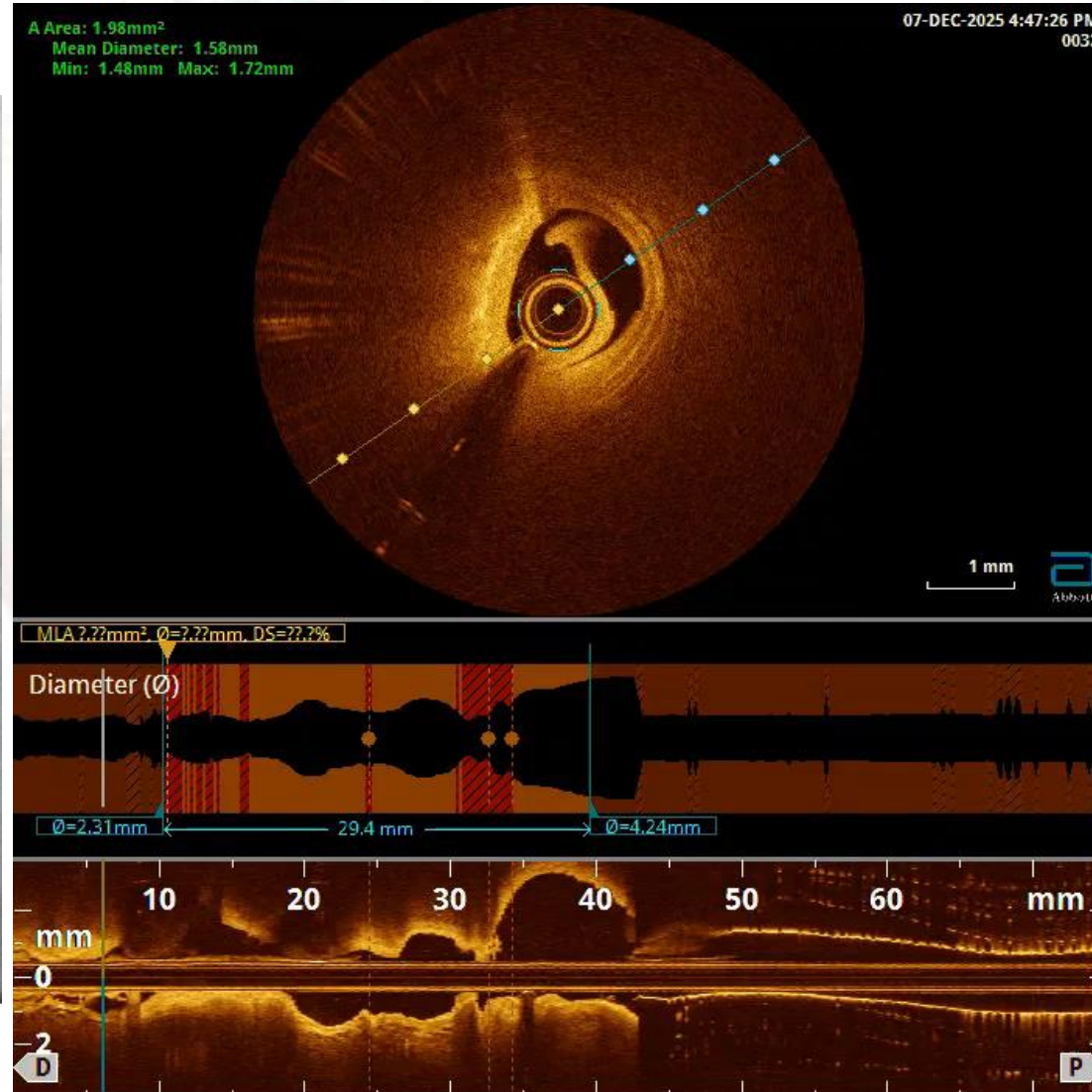
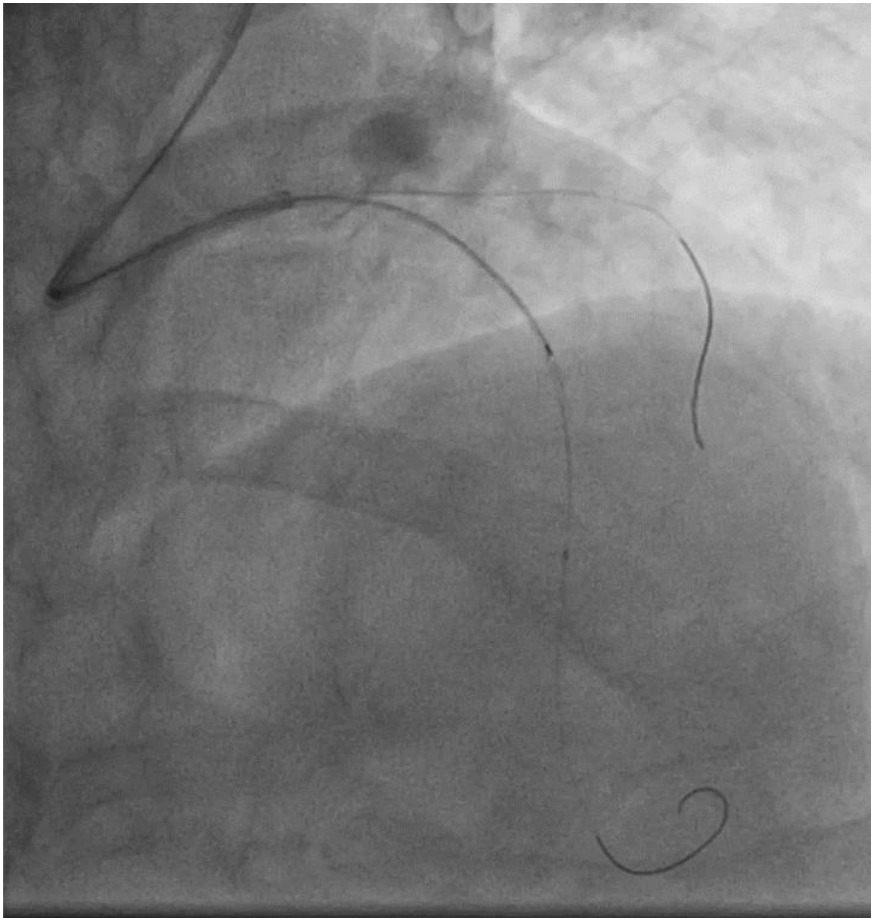


# CAG

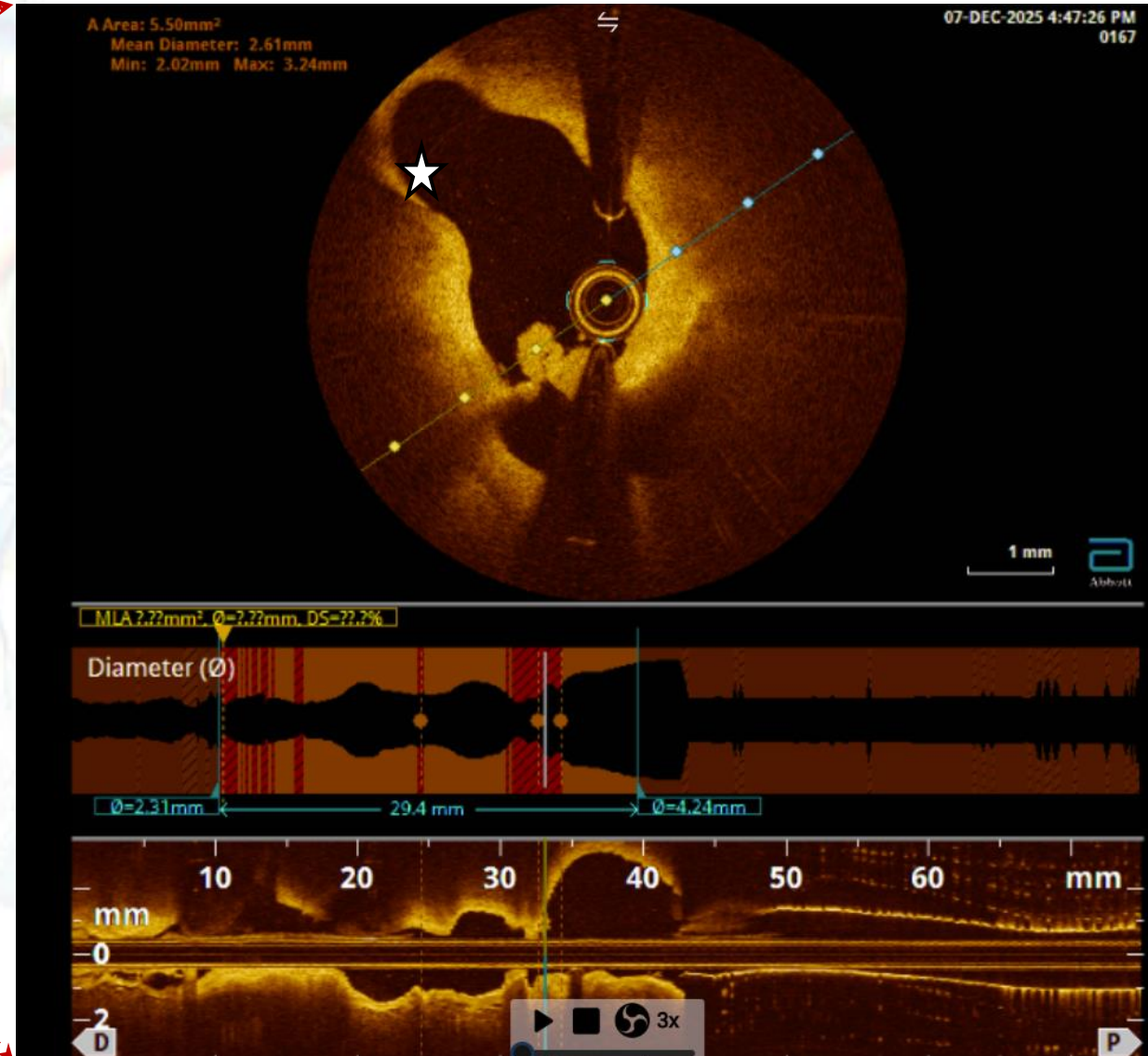
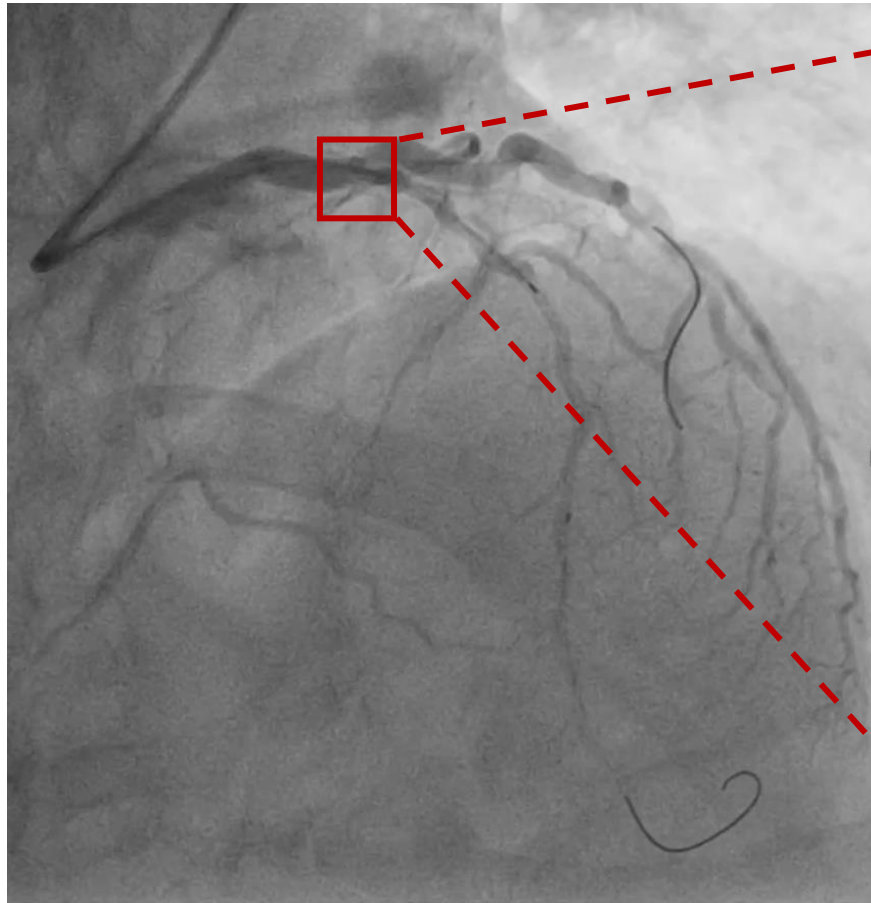


- **Wiring and pre-dilatation  
(2.0x20mm,14-16atm)**
- **Bifurcation lesion of LM-LAD-LCx  
Medina (1:1:1)**
- **PCI plan?**
- **OCT-guided?**

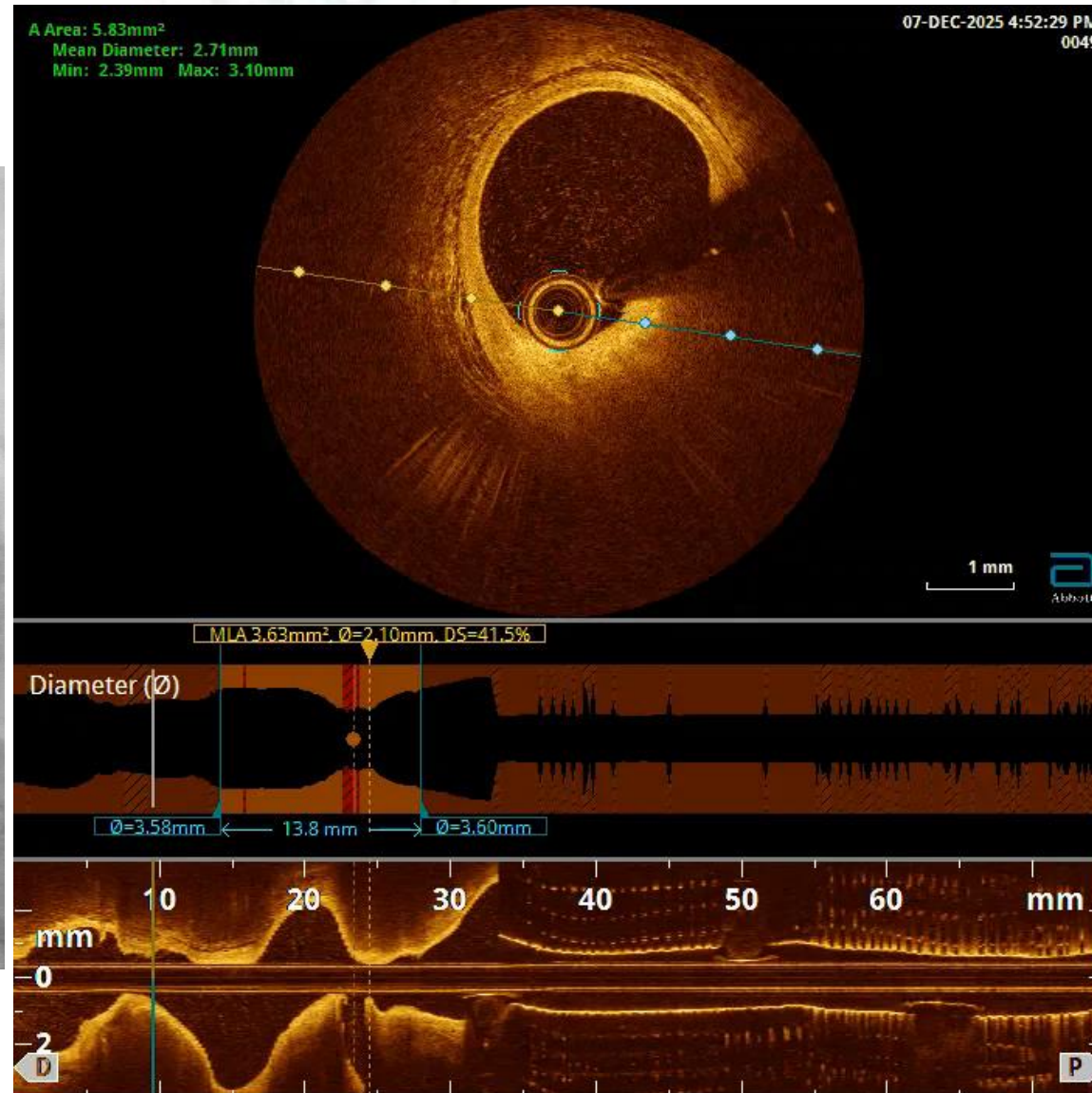




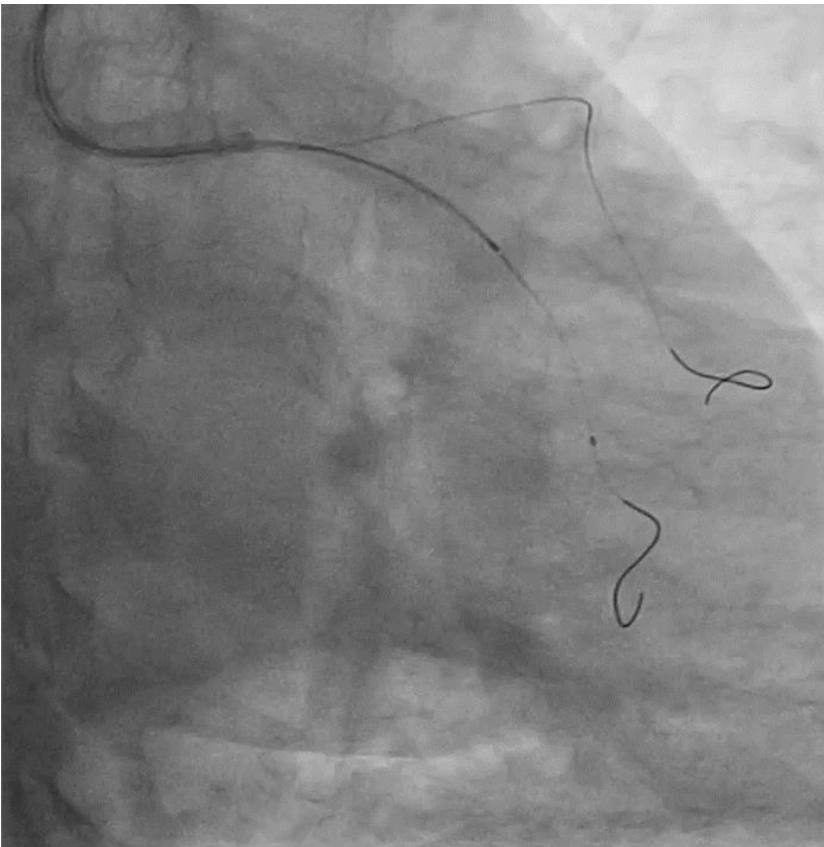
- **Morphology**
  - Large lipid plaque
  - Plaque erosion
  - White thrombus
  - TCFA
- **Length 29mm**
- **Diameter**
  - Prox: d# 4.24mm  
EEL: 4.87mm
  - Distal: d#2.31mm  
EEL: 3.50mm

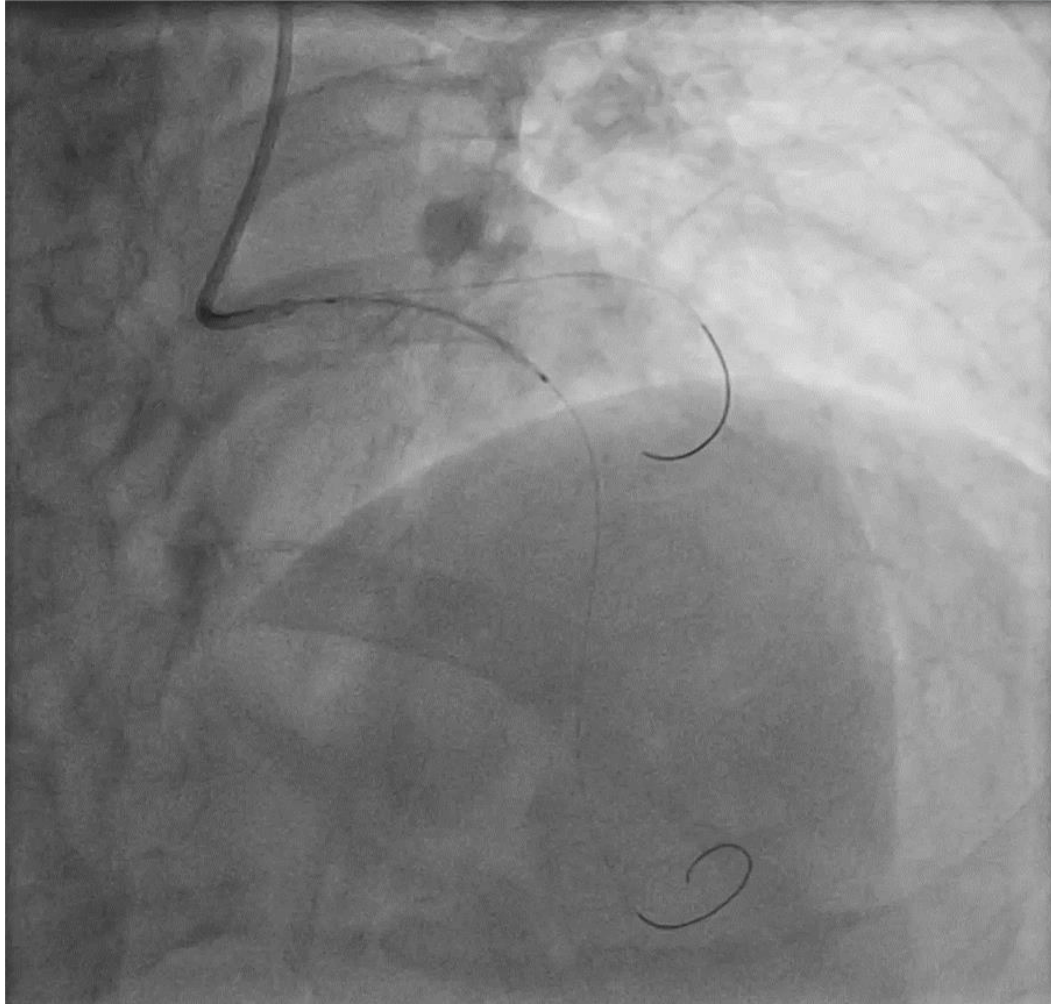


White thrombus, ruptured plaque  
ostLCx (asterisk): stable fibrous cap



- **Morphology**
  - Thick cap plaque
  - White thrombus (above LM bifur)
- **Length** 14 mm
- **Diameter**
  - Prox: d# 4.24mm  
EEL: 4.87mm
  - Distal: d#3.58mm  
EEL: 3.80mm





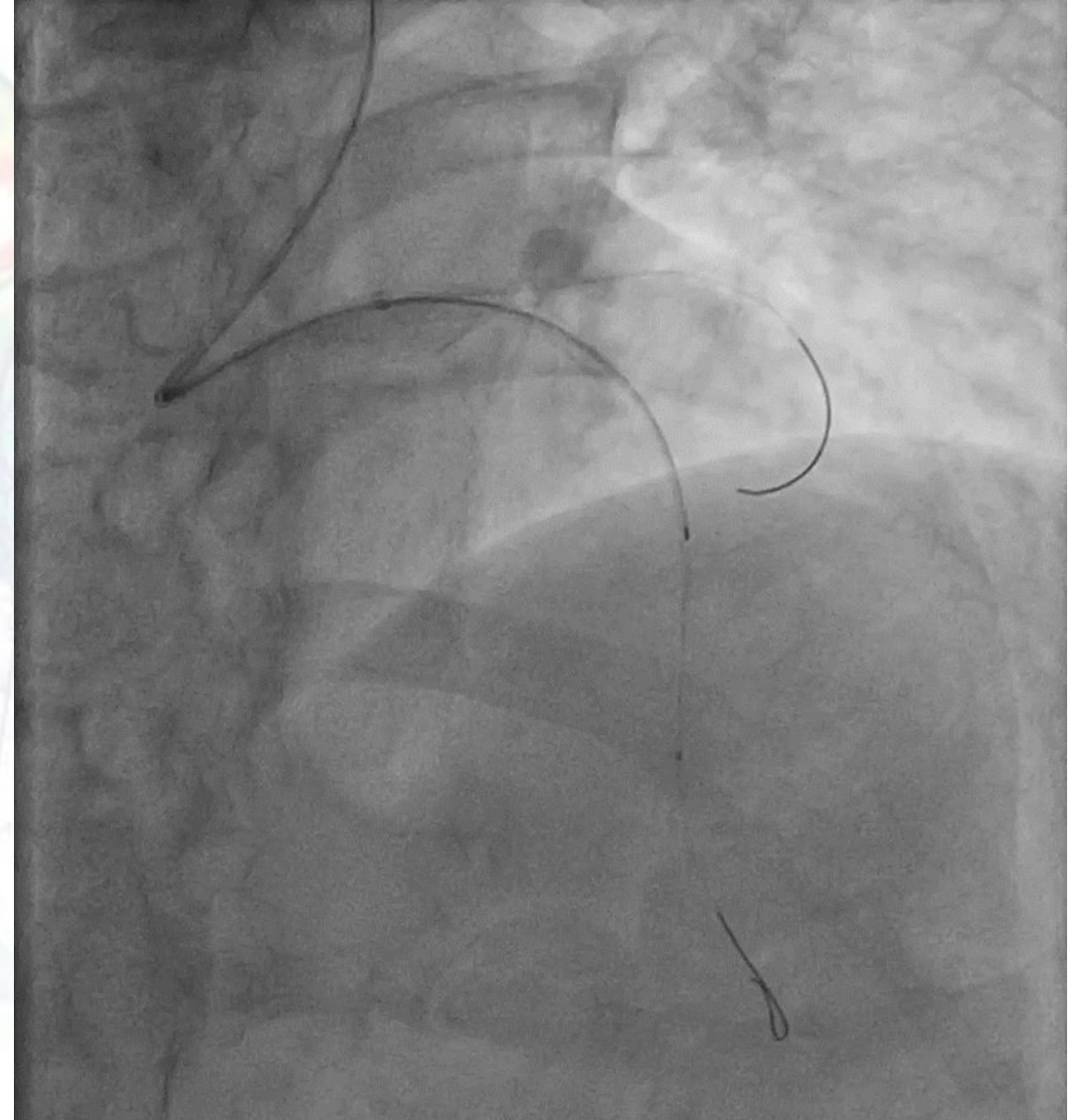
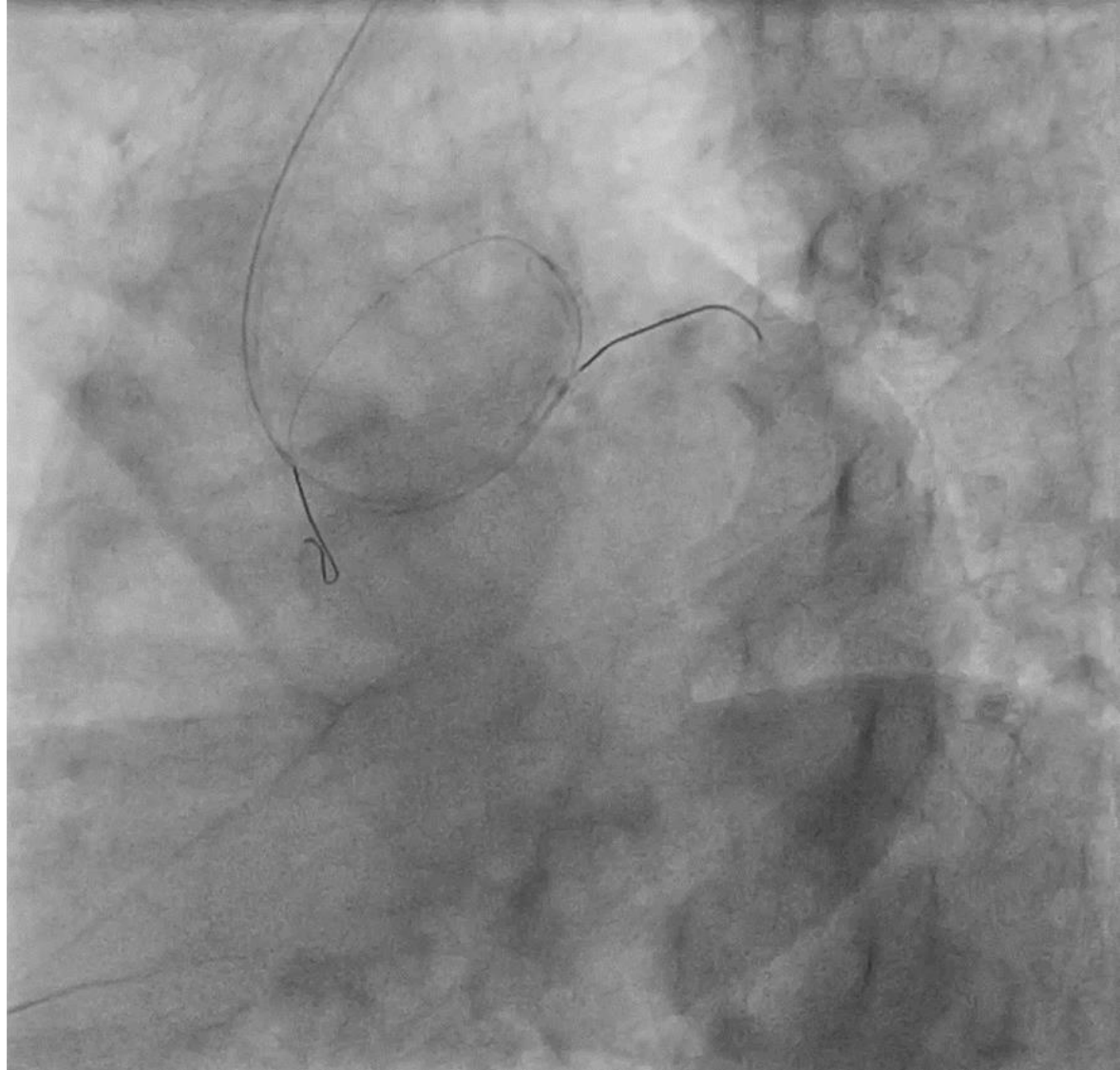
**Orsiron mission 3.5x30mm,  
16atm**

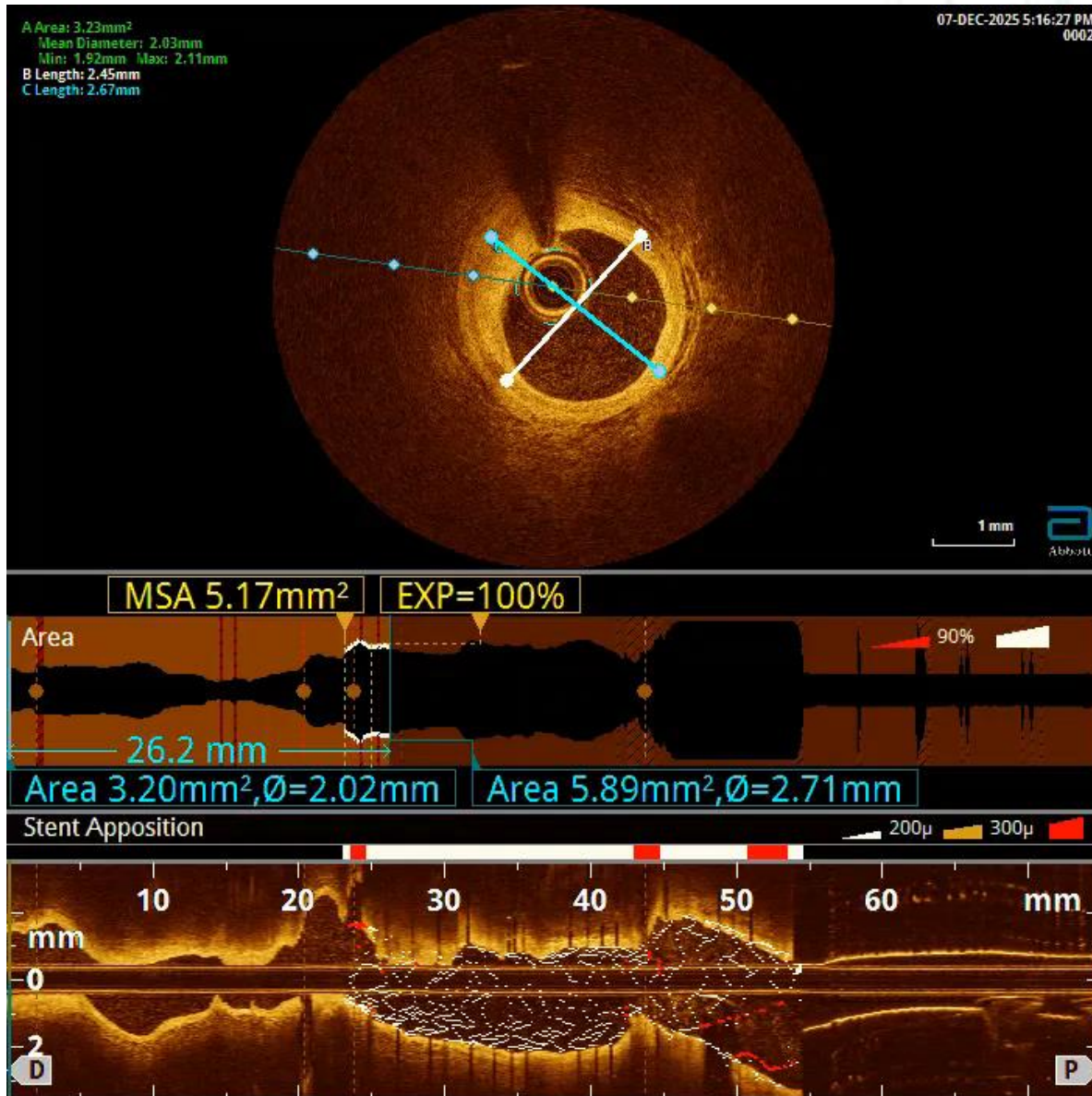


**POT/LM: NC 4.5x8mm,  
16atm**



# PCI of LM-LAD





- **LM-LAD:**

- Adequate apposition
- No dissections
- **Under expansion**

- **OstLCx:** stable, adequate flow

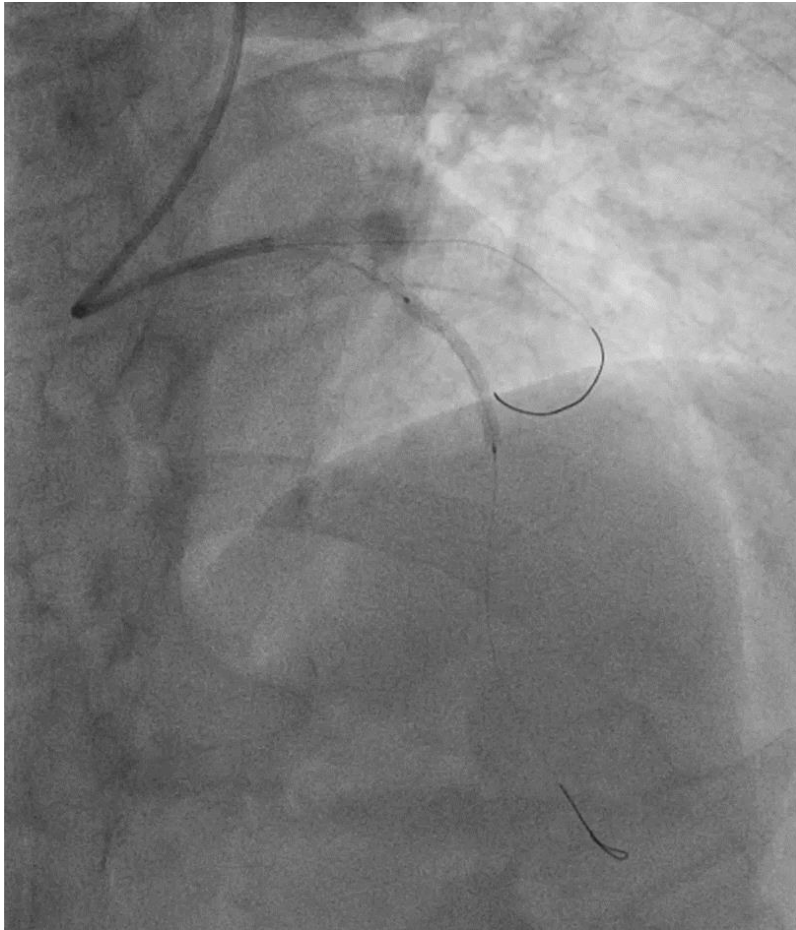
- **LAD II:** sig.stenosis

MLA 1.28 mm<sup>2</sup>,

d#2.5mm

- Provisional strategy

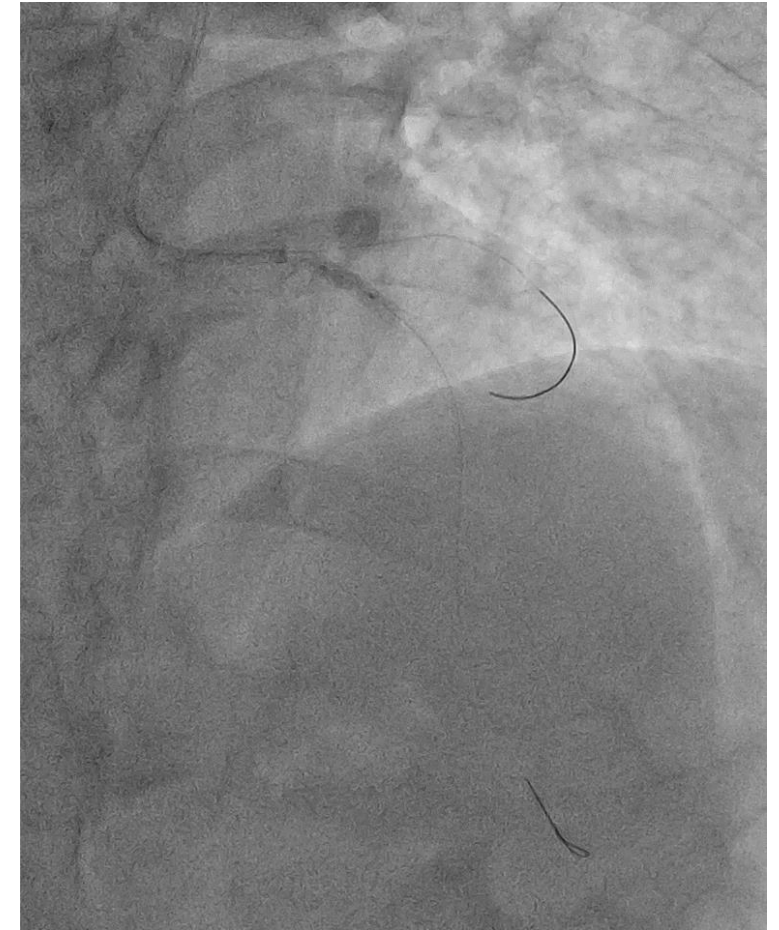
- PCI of LAD II

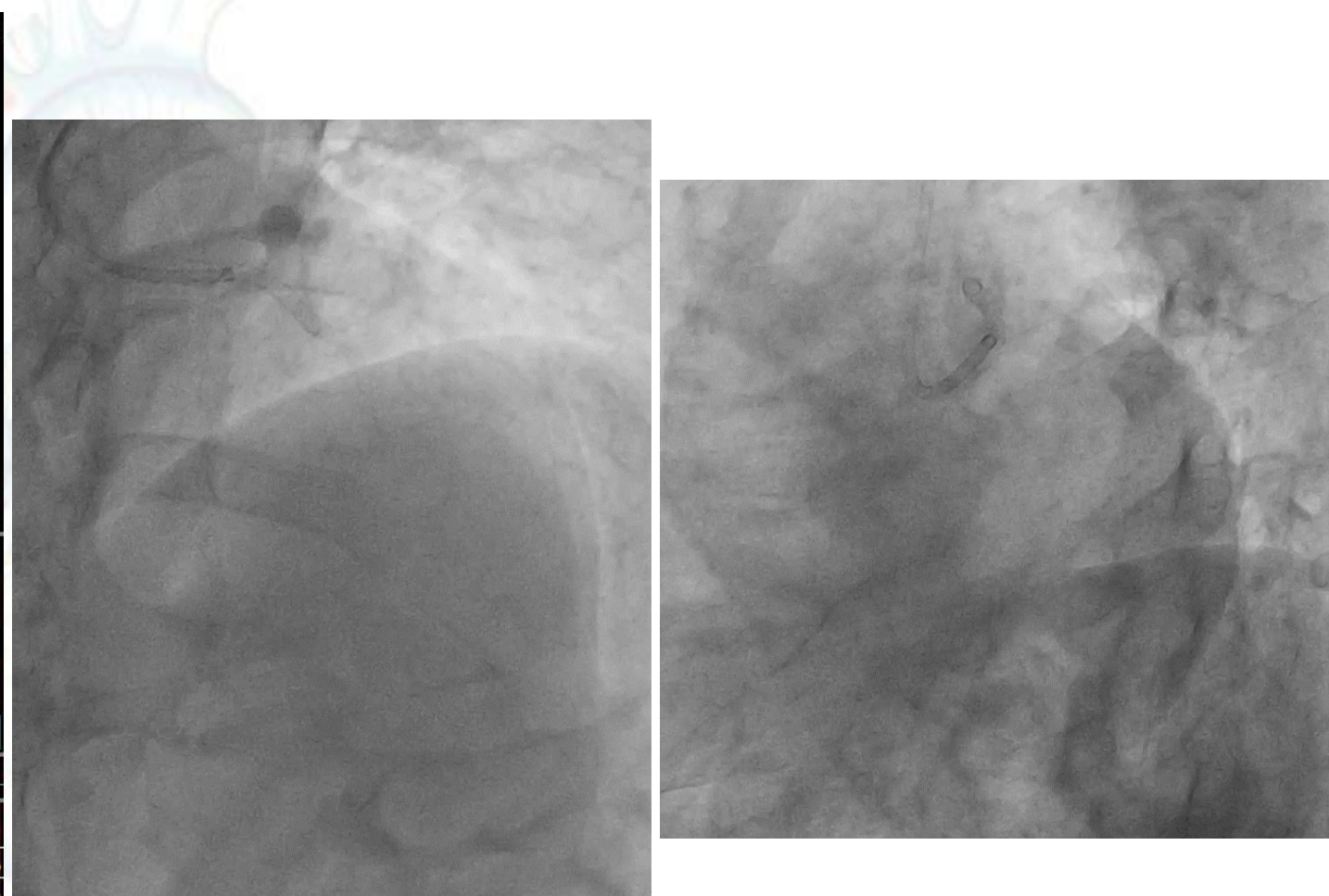
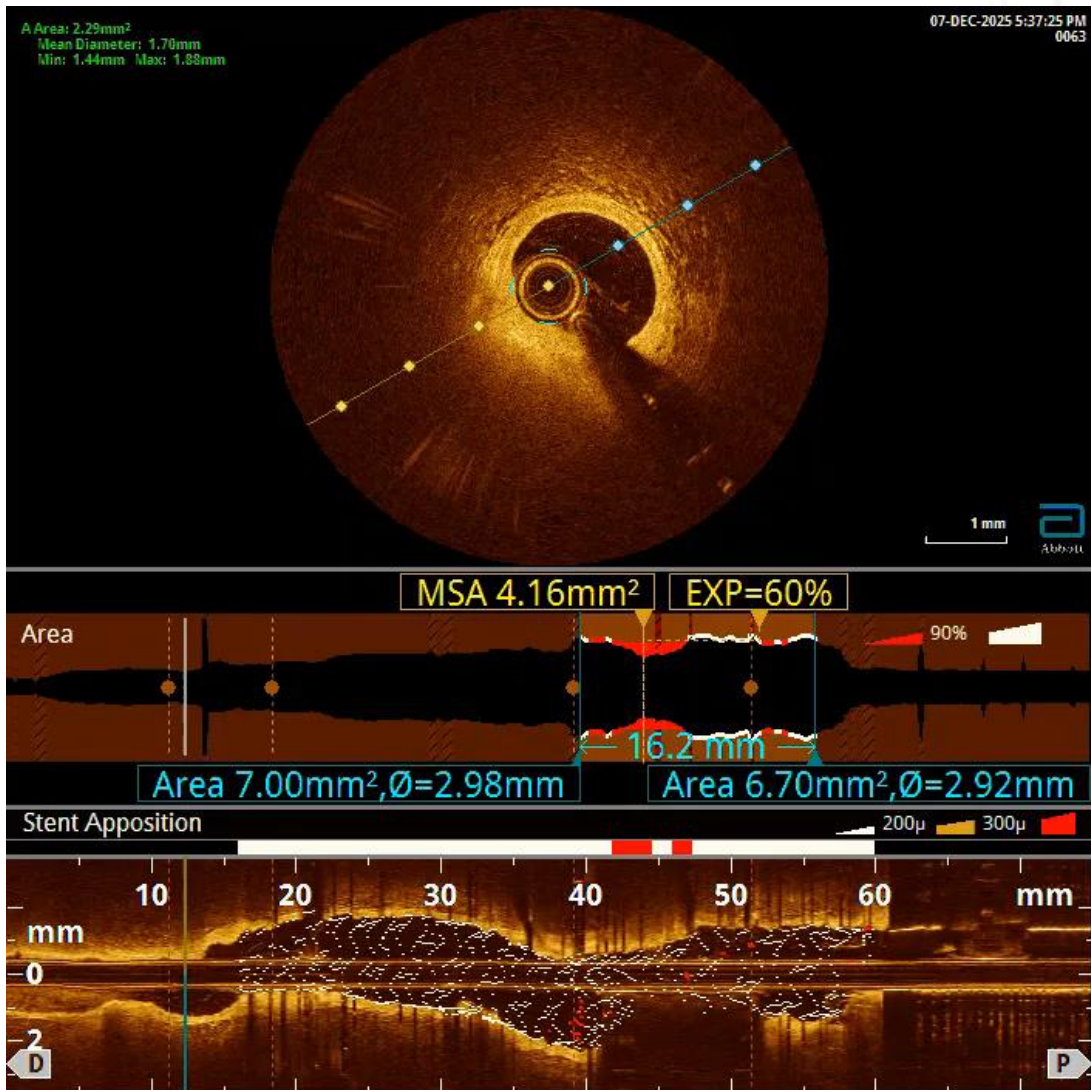


**Orsiron mission 3.5x30mm,  
16atm**



**POT/LAD I: NC 3.0x10mm,  
18atm**







**XIN CHÂN THÀNH CẢM ƠN  
SỰ CHÚ Ý LẮNG NGHE  
CỦA QUÝ ĐỒNG NGHIỆP**