



ASIC COFFEE CORNER

Dr Doan Thi Thuy An

MD. Tran Minh Trung



Patient Demographics:

- Gender: Male
- Age: 67
- Chief complaint: chest pain
- Diagnose : CCS III

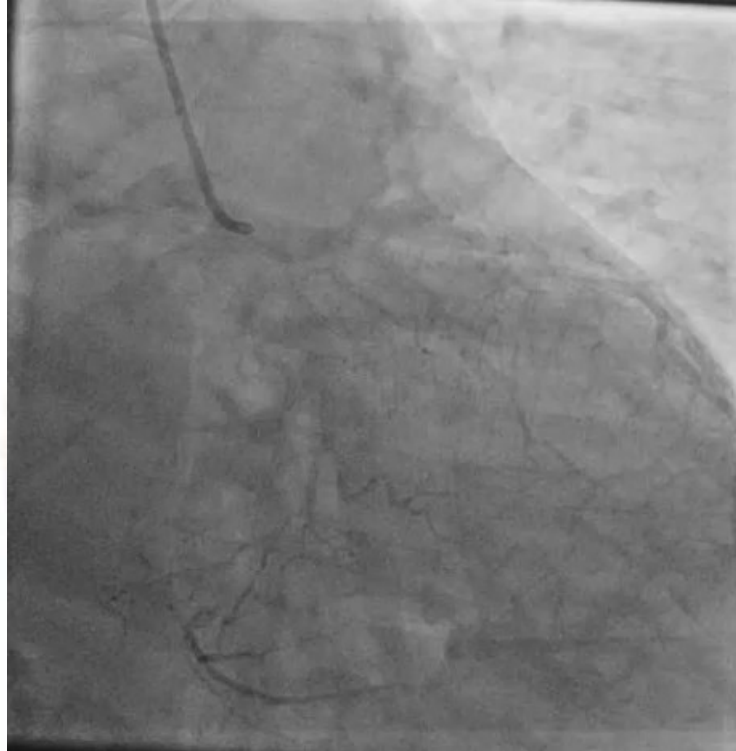
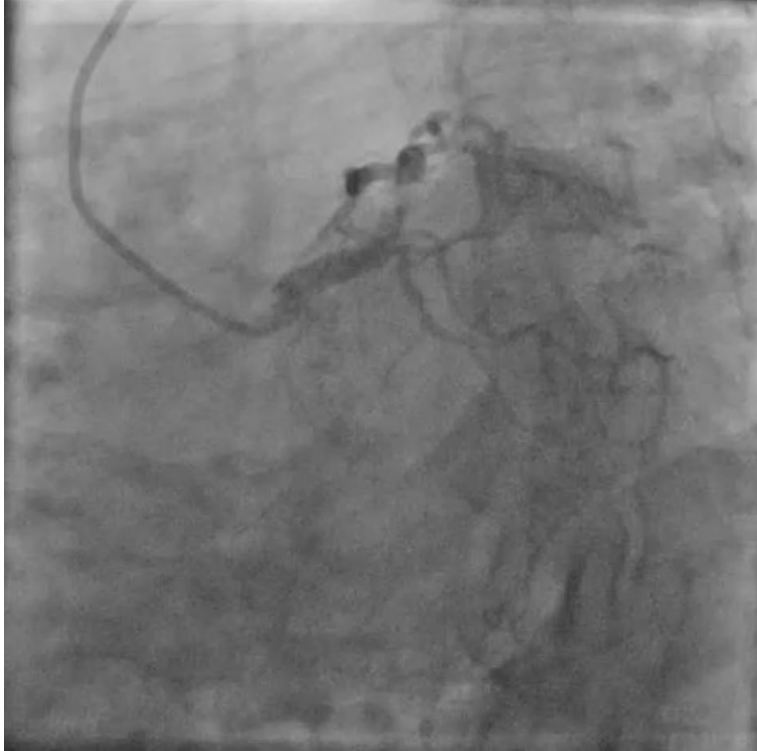
Past Medical History

- Hypertension – 10 years
- Smoker – 20 pack-years
- Prior history of CAD: stent RCA
(3DES9/10/2024)- 90% LAD I- 70%
LAD II- 50% D1 – 50% LCx





CAG Results:



Left Main
Pre-PCI

1 mm



MLA 2.49mm², \varnothing =1.76mm, DS=36.2%, AS=59.0%

Diameter (\varnothing)

\varnothing =2.46mm, DS=28.5%, AS=47.9%

15.8 mm

\varnothing =3.06mm, DS=42.5%, AS=66.2%

mm

10

20

A Length (18.9mm)

40

C Length (1.8mm)

B Length (2.0mm)
D Length (3.0mm)

60

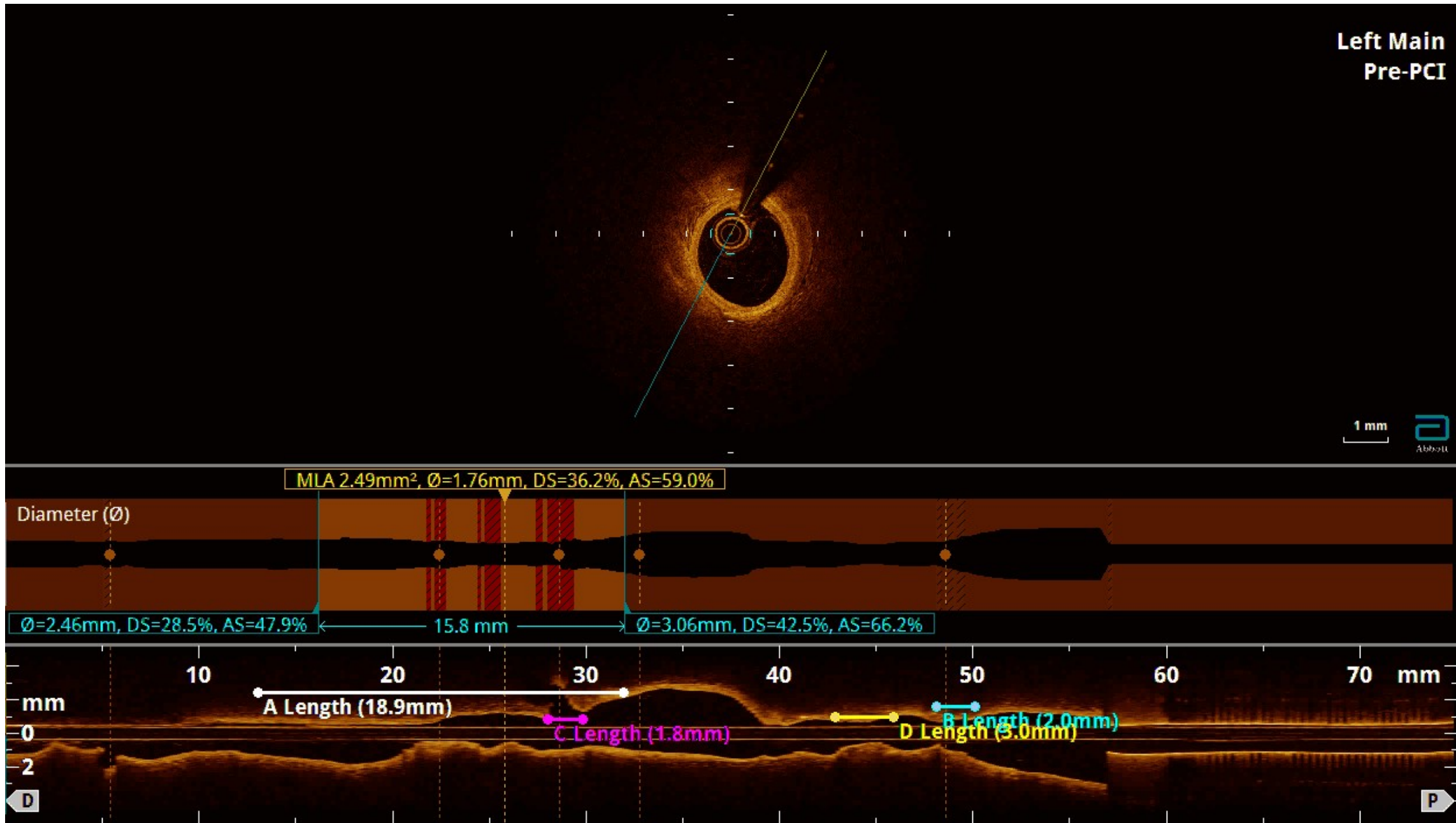
70 mm

0

2

D

P



THANK YOU !!!

• .

